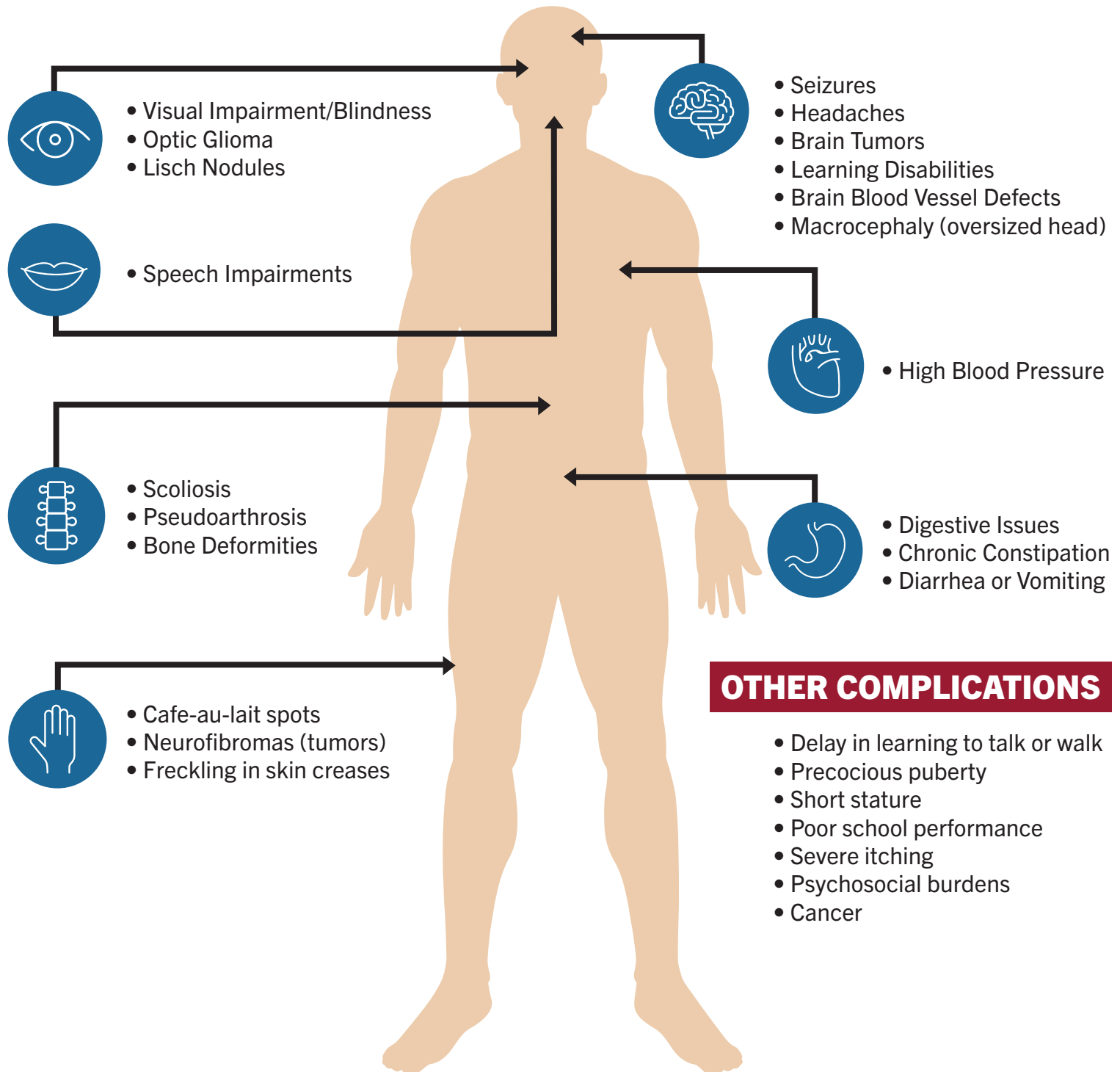




NF1 Body Sheet

Neurofibromatosis Type-1 (NF1) is an autosomal dominant genetic disorder that causes tumors to grow on the covering of the nerves anywhere in the body at any time. Neurofibromatosis can affect the body in a number of ways, and no two cases of NF1 are the same. Below are potential symptoms of NF1.



OTHER COMPLICATIONS

- Delay in learning to talk or walk
- Precocious puberty
- Short stature
- Poor school performance
- Severe itching
- Psychosocial burdens
- Cancer